

**Precision meets Motion**

**NEWS**



**EWS.Swiss Tools**

**für STAR und CITIZEN Maschinen**  
for STAR and CITIZEN machines

**EWS**  
Tool Technologies

# **EWS**.Swiss Tools

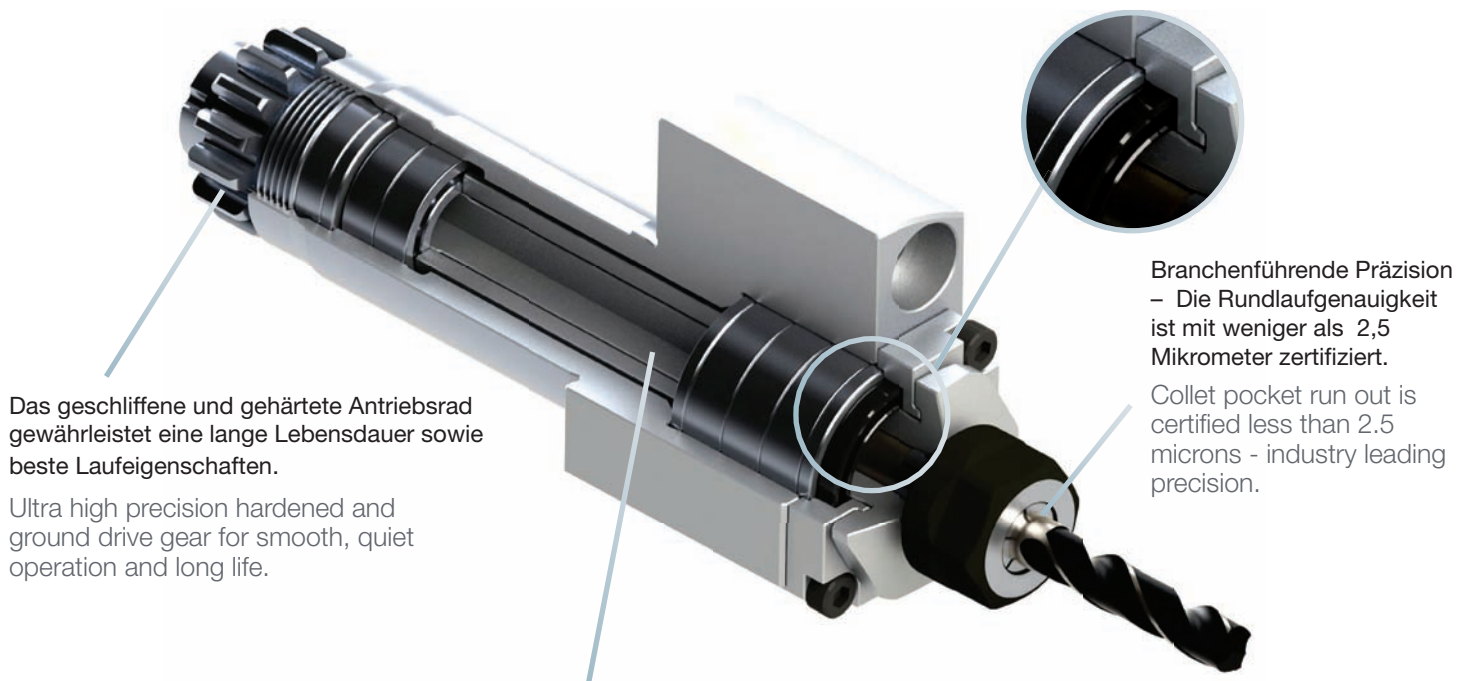
## **für STAR und CITIZEN Maschinen** for STAR and CITIZEN machines

### **Eigenschaften / Product Features**

- Hochpräzise Lagerung / High precision bearings
- Innovative Dichtungstechnik / innovative sealing technology
- Spindelrundlauf < 3µ / Spindle concentricity < 3µ
- Permanentlauf getestet / Durable construction
- Wartungsfrei / Maintenance free

Der Flansch schützt Lagerung und Dichtung vor Schmutz und stellt somit einen elementaren Bestandteil der Spindel dar.

Oversized flange is integral to the spindle, providing debris protection for the front seal and bearings.



Das geschliffene und gehärtete Antriebsrad gewährleistet eine lange Lebensdauer sowie beste Laufeigenschaften.

Ultra high precision hardened and ground drive gear for smooth, quiet operation and long life.

Branchenführende Präzision  
– Die Rundlaufgenauigkeit ist mit weniger als 2,5 Mikrometer zertifiziert.

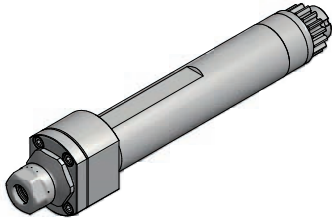
Collet pocket run out is certified less than 2.5 microns - industry leading precision.

Die Axialspindel wird aus S7 Werkzeugstahl gefertigt und ist daher besonders beständig. Wettbewerber verwenden in der Regel Stahl einer niedrigeren Besoldungsgruppe.

Axial spindle is manufactured utilizing S7 tool steel, providing superior strength, rigidity, and abrasion resistance. Competitive product typically uses lower grade alloy steel.

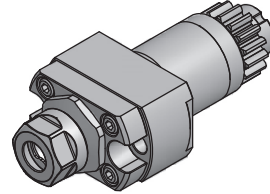
# Inhaltsverzeichnis / Contents

## CITIZEN



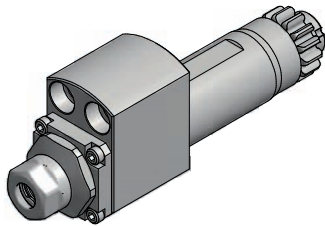
40.CIT12-GSC607  
Axial Bohr- und Fräskopf /  
Axial drilling and milling head

1.1



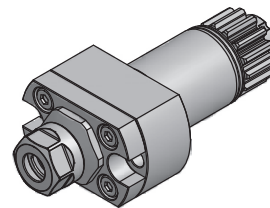
40.CIT12-GSC1107  
Axial Bohr- und Fräskopf /  
Axial drilling and milling head

1.3



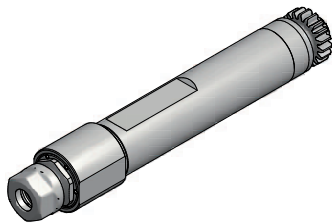
40.CIT12-GSC907  
Axial Bohr- und Fräskopf /  
Axial drilling and milling head

1.1



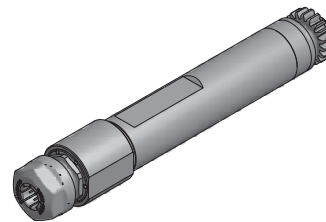
40.CIT12-GSE307  
Axial Bohr- und Fräskopf /  
Axial drilling and milling head

1.4



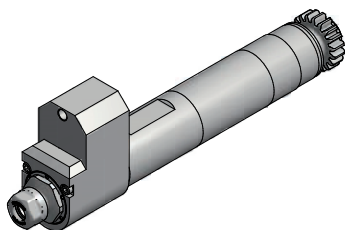
40.CIT16-GSC510  
Axial Bohr- und Fräskopf /  
Axial drilling and milling head

1.2



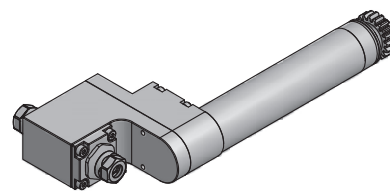
40.CIT20-LCA1C2001  
Axial Bohr- und Fräskopf /  
Axial drilling and milling head

1.4



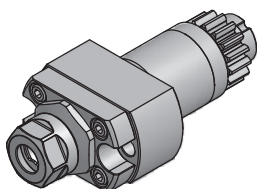
40.CIT1213-GSC510-3X  
Axial Bohr- und Fräskopf /  
Axial drilling and milling head

1.2



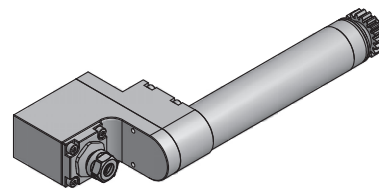
80.CIT12D-GSE306-DE011  
Radial Bohr- und Fräskopf /  
Radial drilling and milling head

1.5



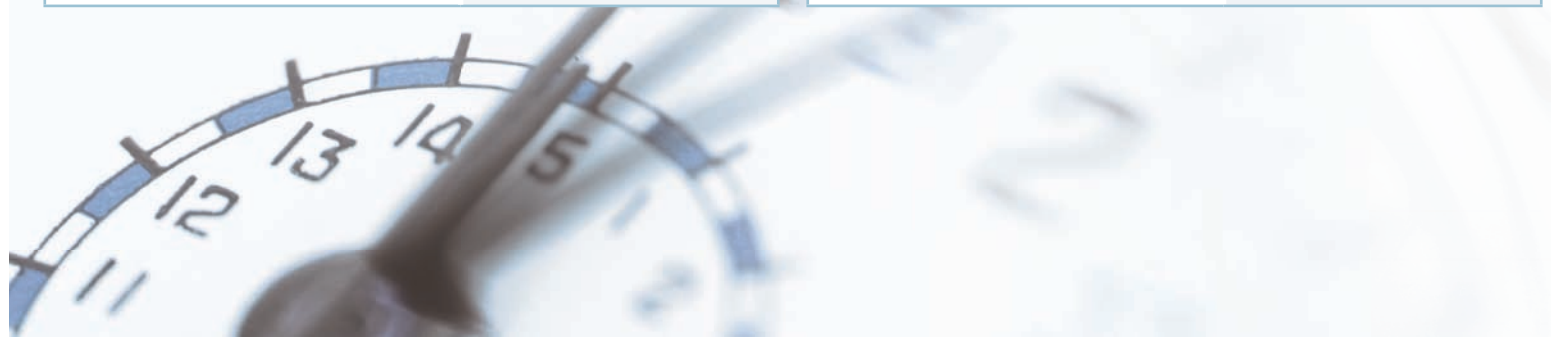
40.CIT12-GSC807  
Axial Bohr- und Fräskopf /  
Axial drilling and milling head

1.3



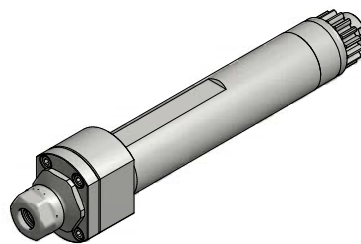
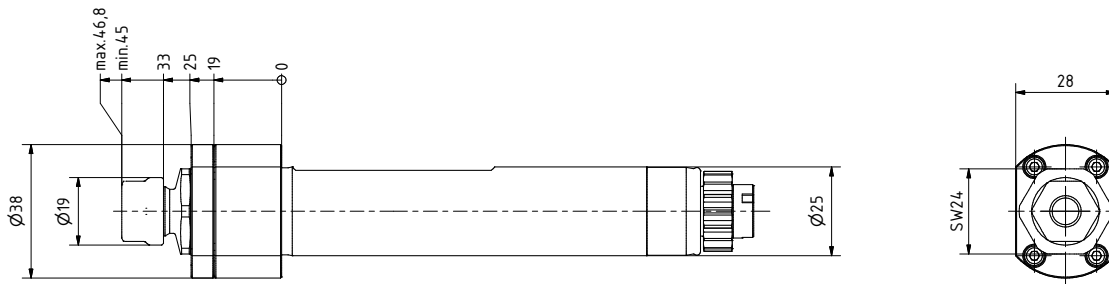
80.CIT12-GSE306-L520  
Radial Bohr- und Fräskopf /  
Radial drilling and milling head

1.5



*Axial Bohr und Fräskopf*  
CITIZEN

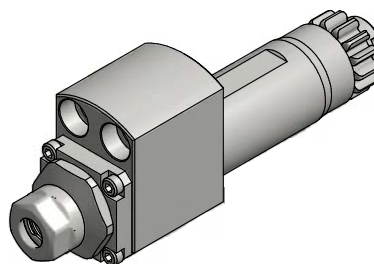
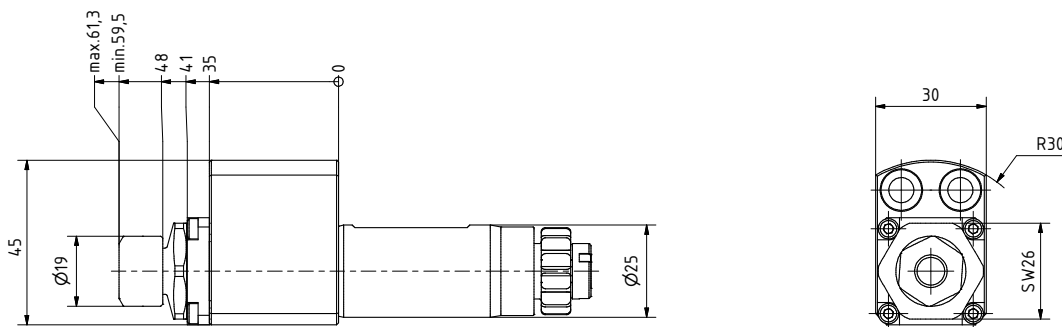
*Axial drilling and milling head*  
CITIZEN



Nr. / No.	Spannzange/ Collet	i	n <sub>max</sub> 1/min	T <sub>max</sub> Nm
40.CIT12-GSC607	ER11 (1-7)	1:1	9000	10

*Axial Bohr und Fräskopf*  
CITIZEN

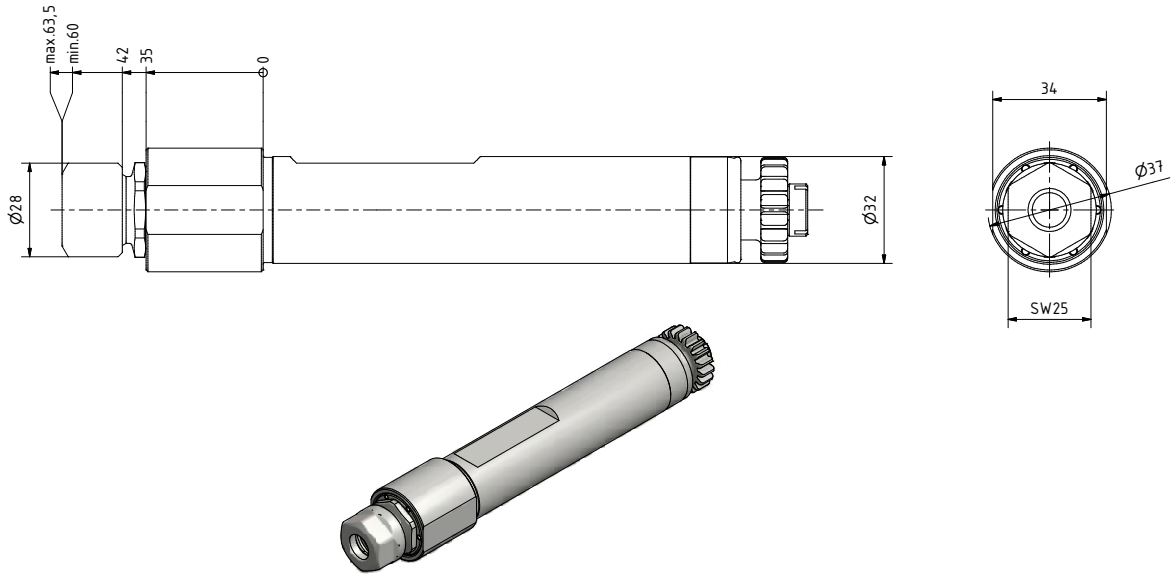
*Axial drilling and milling head*  
CITIZEN



Nr. / No.	Spannzange/ Collet	i	n <sub>max</sub> 1/min	T <sub>max</sub> Nm
40.CIT12-GSC907	ER11 (1-7)	1:1	9000	10

*Axial Bohr und Fräskopf*  
CITIZEN

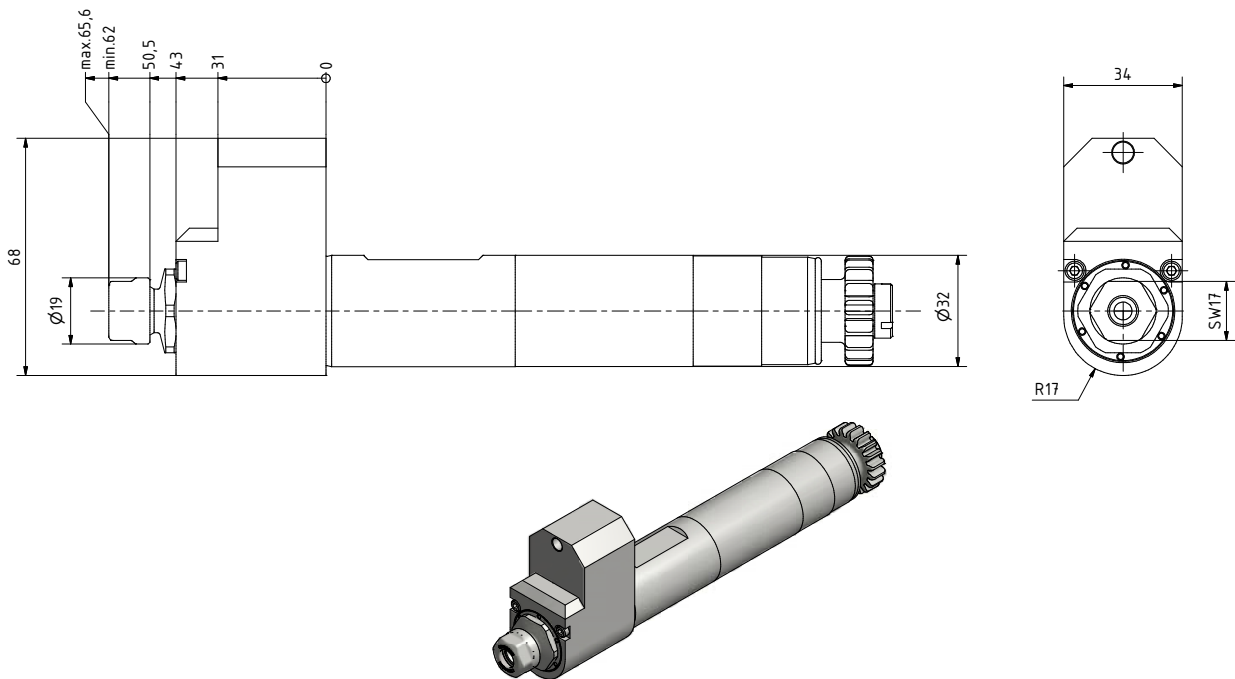
*Axial drilling and milling head*  
CITIZEN



Nr. / No.	Spannzange/ Collet	i	n <sub>max</sub> 1/min	T <sub>max</sub> Nm
40.CIT16-GSC510	ER16 (1-10)	1:1	9000	25

*Axial Bohr und Fräskopf*  
CITIZEN

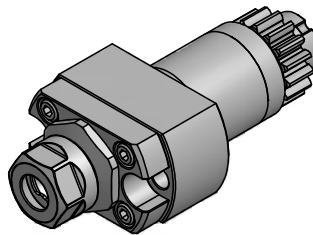
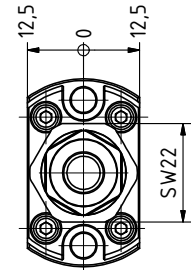
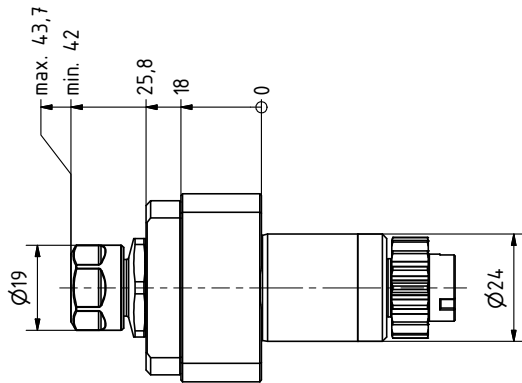
*Axial drilling and milling head*  
CITIZEN



Nr. / No.	Spannzange/ Collet	i	n <sub>max</sub> 1/min	T <sub>max</sub> Nm
40.CIT1213-GSC510-3X	ER11 (1-7)	3:1	2000	60

*Axial Bohr und Fräskopf*  
CITIZEN

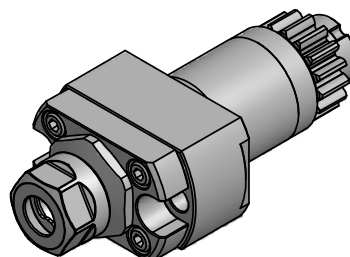
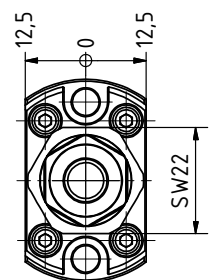
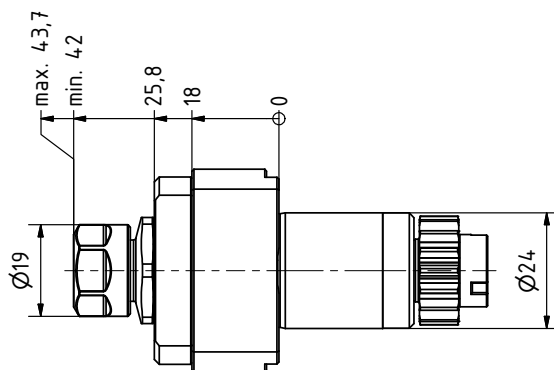
*Axial drilling and milling head*  
CITIZEN



Nr. / No.	Spannzange/ Collet	i	n <sub>max</sub> 1/min	T <sub>max</sub> Nm
40.CIT12-GSC807	ER11 (1-7)	1:1	6000	16

*Axial Bohr und Fräskopf*  
CITIZEN

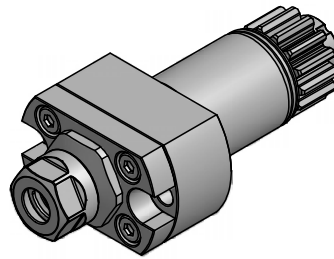
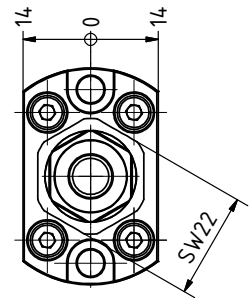
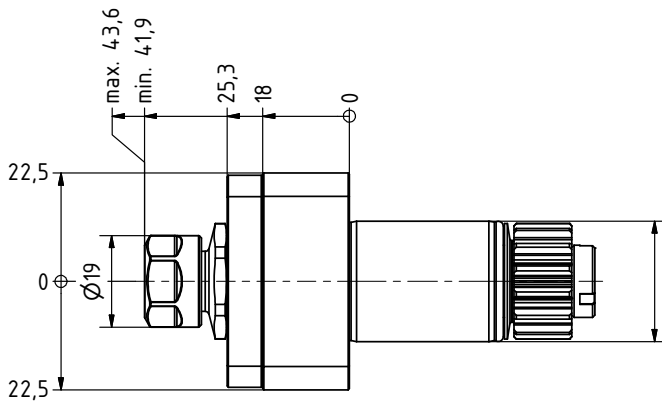
*Axial drilling and milling head*  
CITIZEN



Nr. / No.	Spannzange/ Collet	i	n <sub>max</sub> 1/min	T <sub>max</sub> Nm
40.CIT12-GSC1107	ER11 (1-7)	1:1	6000	16

*Axial Bohr und Fräskopf*  
CITIZEN

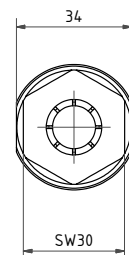
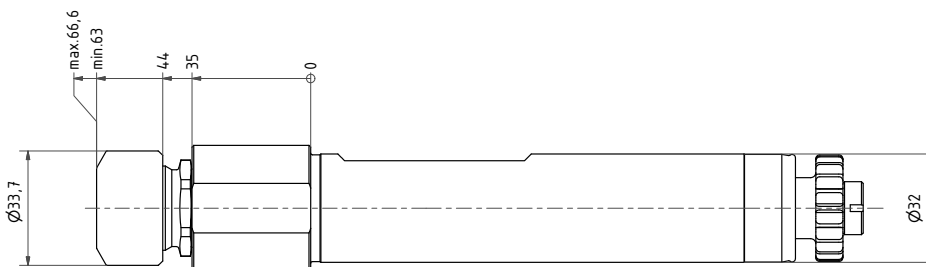
*Axial drilling and milling head*  
CITIZEN



Nr. / No.	Spannzange/ Collet	i	n <sub>max</sub> 1/min	T <sub>max</sub> Nm
40.CIT12-GSE307	ER11 (1-7)	1:1	6000	16

*Axial Bohr und Fräskopf*  
CITIZEN

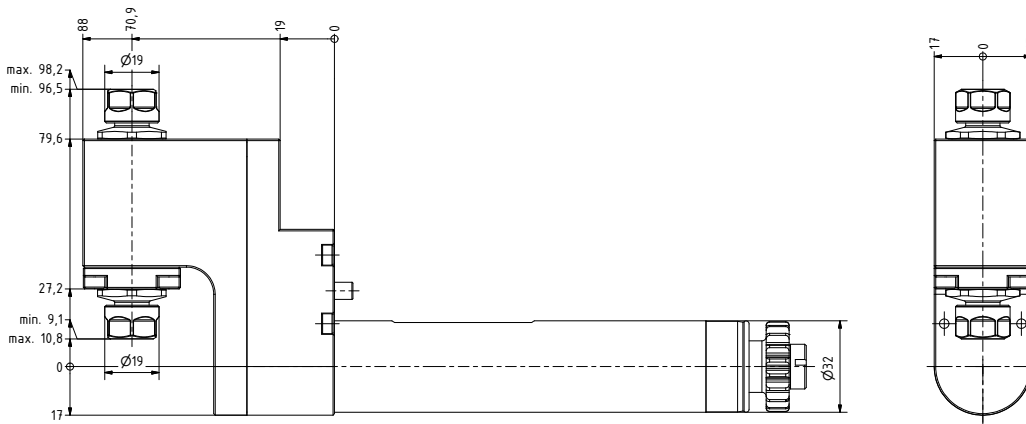
*Axial drilling and milling head*  
CITIZEN



Nr. / No.	Spannzange/ Collet	i	n <sub>max</sub> 1/min	T <sub>max</sub> Nm
40.CIT20-LCA1C2001	ER20 (2-13)	1:1	8000	25

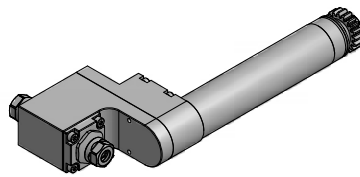
*Radial Bohr und Fräskopf*  
CITIZEN

*Radial drilling and milling head*  
CITIZEN



**zurückgesetzt/ offset**

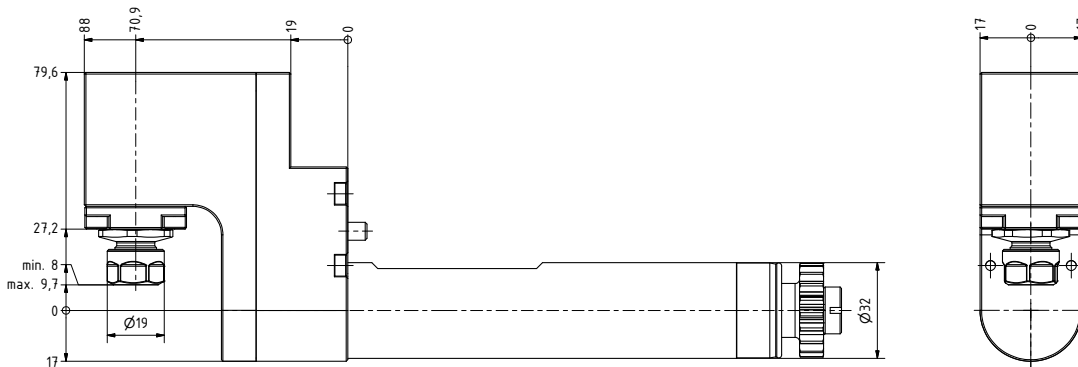
**doppelseitig /  
double sided**



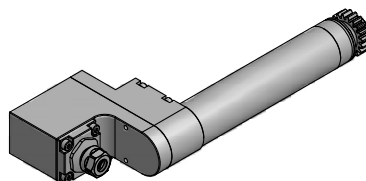
Nr. / No.	Spannzange/ Collet	i	n <sub>max</sub> 1/min	T <sub>max</sub> Nm
80.CIT12D-GSE306-DE011	ER11 (1-7)	1:1	6000	16

*Radial Bohr und Fräskopf*  
CITIZEN

*Radial drilling and milling head*  
CITIZEN



**zurückgesetzt/ offset**

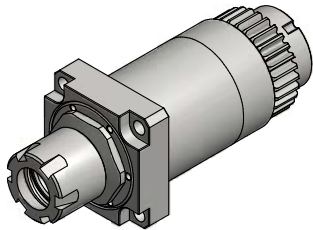


Nr. / No.	Spannzange/ Collet	i	n <sub>max</sub> 1/min	T <sub>max</sub> Nm
80.CIT12-GSE306-L520	ER11 (1-7)	1:1	6000	16



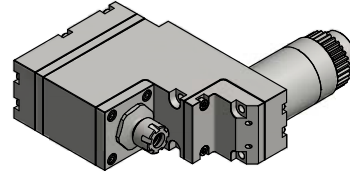
*Inhaltsverzeichnis / Contents*

**STAR**



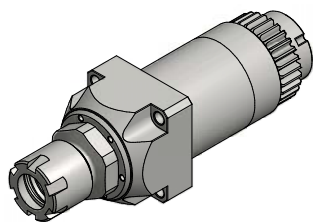
**40.STAR16-33150**  
 Axial Bohr- und Fräskopf /  
 Axial drilling and milling head

1.6



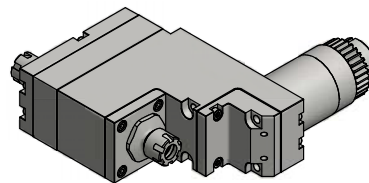
**80.STAR12-57157**  
 Radial Bohr- und Fräskopf /  
 Radial drilling and milling head

1.9



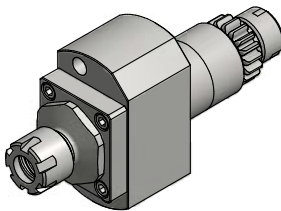
**40.STAR16-57155**  
 Axial Bohr- und Fräskopf /  
 Axial drilling and milling head

1.6



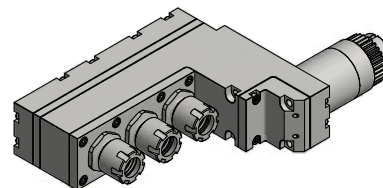
**80.STAR12D-57156**  
 Radial Bohr- und Fräskopf /  
 Radial drilling and milling head

1.9



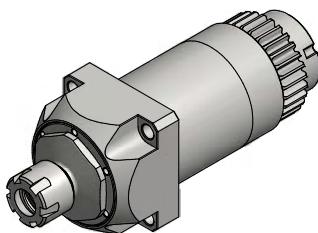
**40.STAR12-54161**  
 Axial Bohr- und Fräskopf /  
 Axial drilling and milling head

1.7



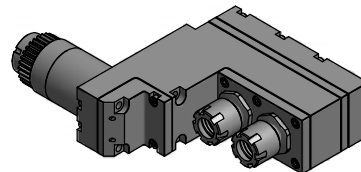
**80.STAR16TX-66151**  
 Radial Bohr- und Fräskopf /  
 Radial drilling and milling head

1.10



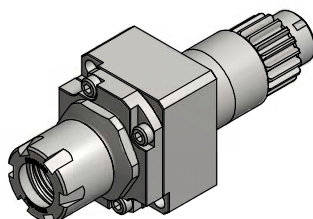
**40.STAR12-57163**  
 Axial Bohr- und Fräskopf /  
 Axial drilling and milling head

1.7



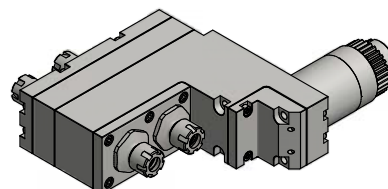
**80.STAR16DX-54151**  
 Radial Bohr- und Fräskopf /  
 Radial drilling and milling head

1.10



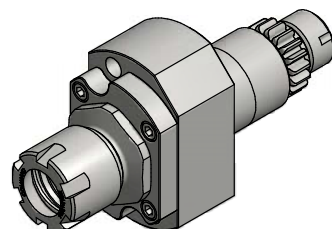
**40.STAR16-0R161**  
 Radial Bohr- und Fräskopf /  
 Radial drilling and milling head

1.8



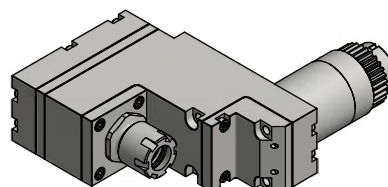
**80.STAR12QX-66159**  
 Radial Bohr- und Fräskopf /  
 Radial drilling and milling head

1.11



**40.STAR16-57161**  
 Radial Bohr- und Fräskopf /  
 Radial drilling and milling head

1.8

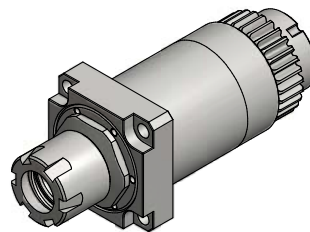
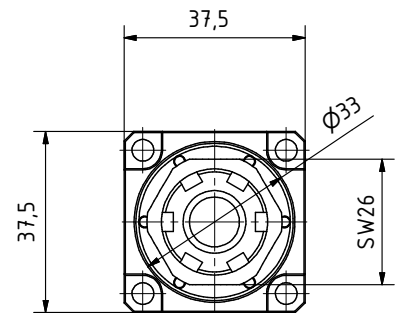
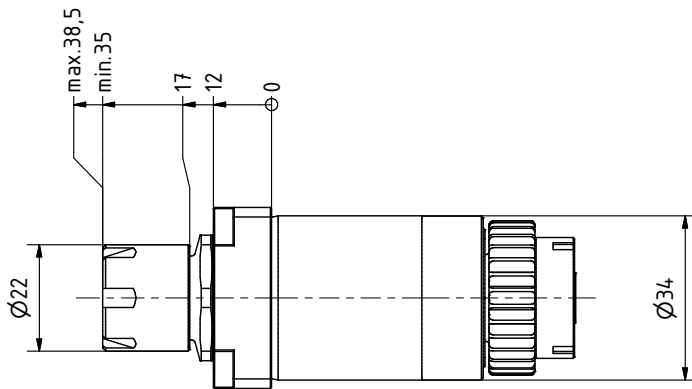


**80.STAR16-57151**  
 Radial Bohr- und Fräskopf /  
 Radial drilling and milling head

1.11

*Axial Bohr und Fräskopf*  
**STAR**

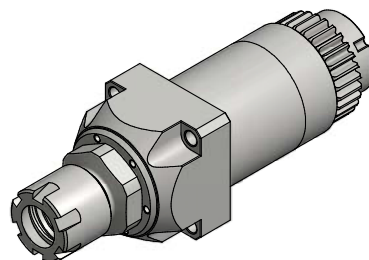
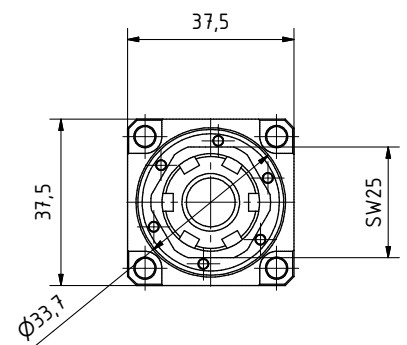
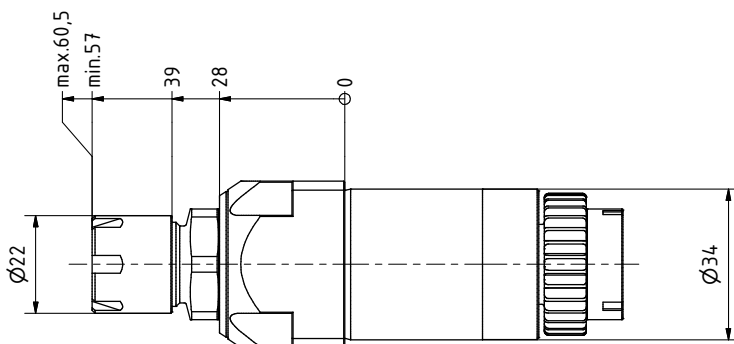
*Axial drilling and milling head*  
**STAR**



Nr. / No.	Spannzange/ Collet	i	n <sub>max</sub> 1/min	T <sub>max</sub> Nm
40.STAR16-33150	ER16 (1-10)	1:1	9000	25

*Axial Bohr und Fräskopf*  
**STAR**

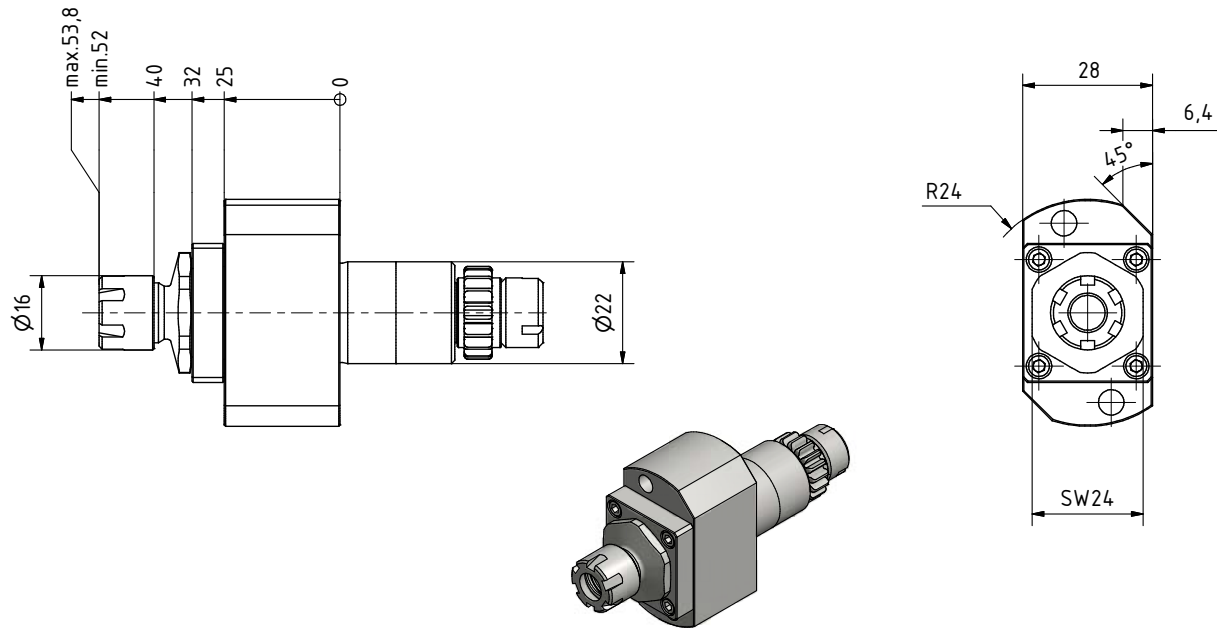
*Axial drilling and milling head*  
**STAR**



Nr. / No.	Spannzange/ Collet	i	n <sub>max</sub> 1/min	T <sub>max</sub> Nm
40.STAR16-57155	ER16 (1-10)	1:1	9000	25

*Axial Bohr und Fräskopf*  
STAR

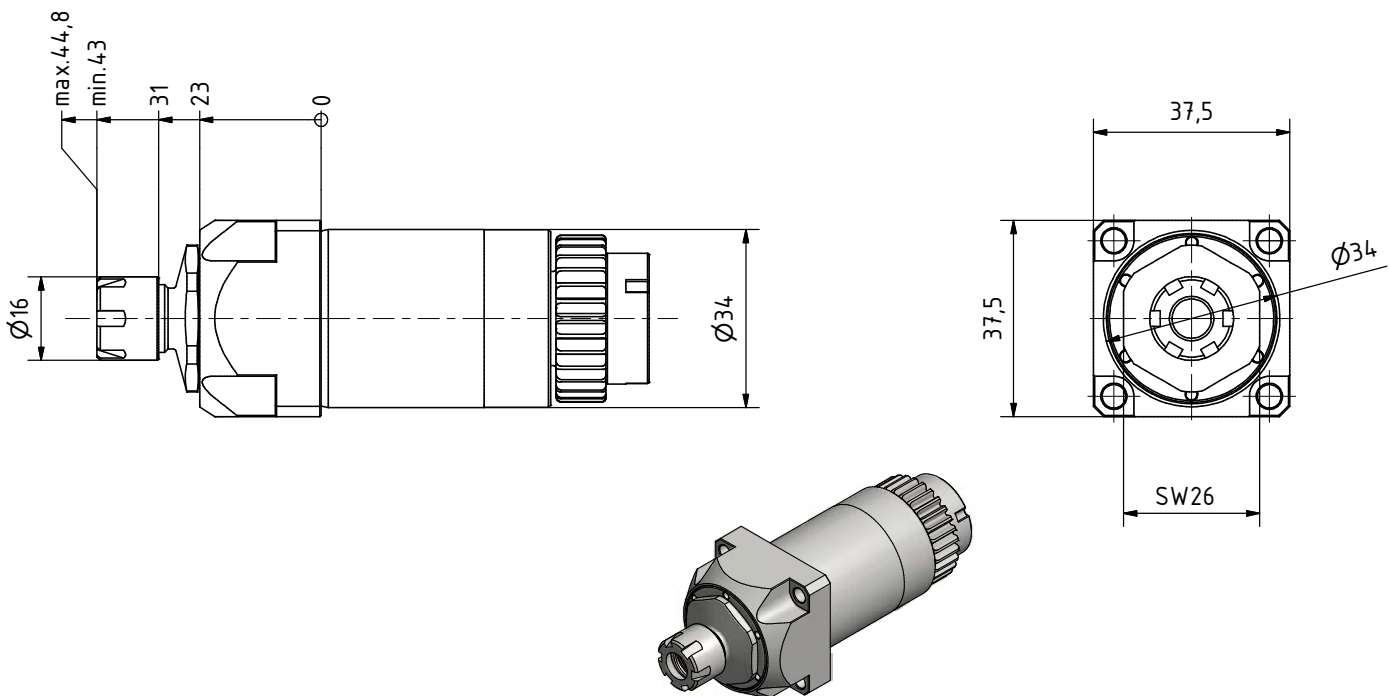
*Axial drilling and milling head*  
STAR



Nr. / No.	Spannzange/ Collet	i	n <sub>max</sub> 1/min	T <sub>max</sub> Nm
40.STAR12-54161	ER11 (1-7)	1:1	9000	10

*Axial Bohr und Fräskopf*  
STAR

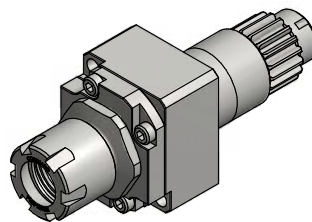
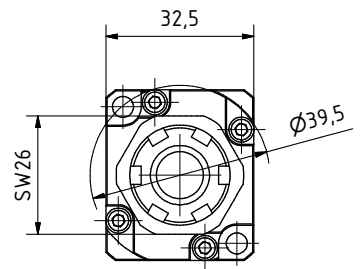
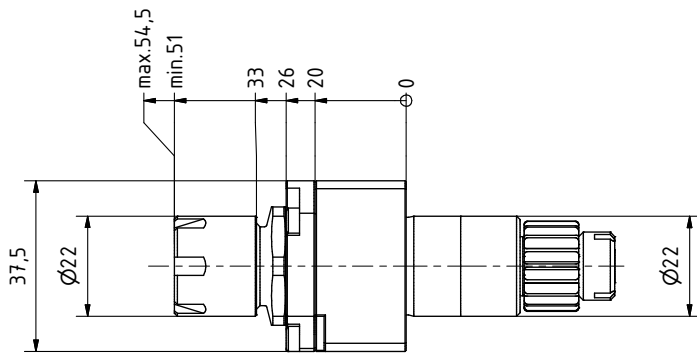
*Axial drilling and milling head*  
STAR



Nr. / No.	Spannzange/ Collet	i	n <sub>max</sub> 1/min	T <sub>max</sub> Nm
40.STAR12-57163	ER11 (1-7)	1:1	9000	25

*Axial Bohr und Fräskopf*  
STAR

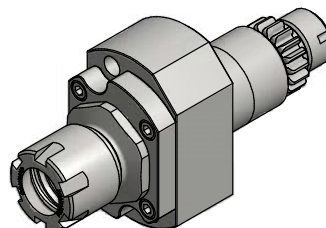
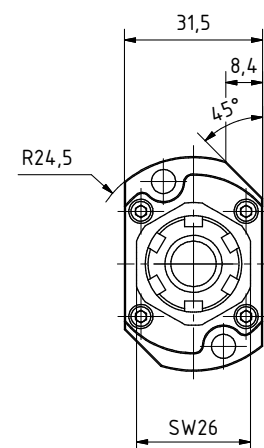
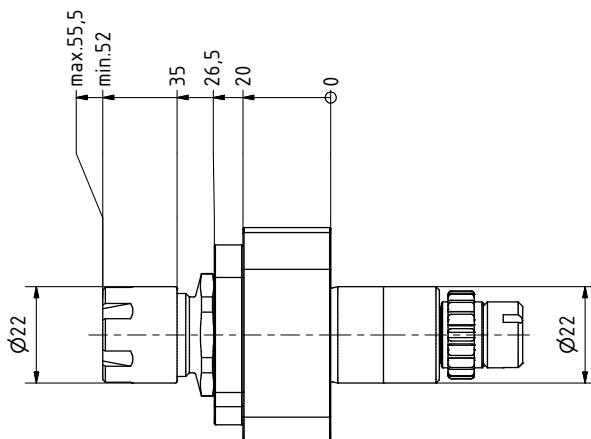
*Axial drilling and milling head*  
STAR



Nr. / No.	Spannzange/ Collet	i	n <sub>max</sub> 1/min	T <sub>max</sub> Nm
40.STAR16-0R161	ER16 (1-10)	1:1	9000	25

*Axial Bohr und Fräskopf*  
STAR

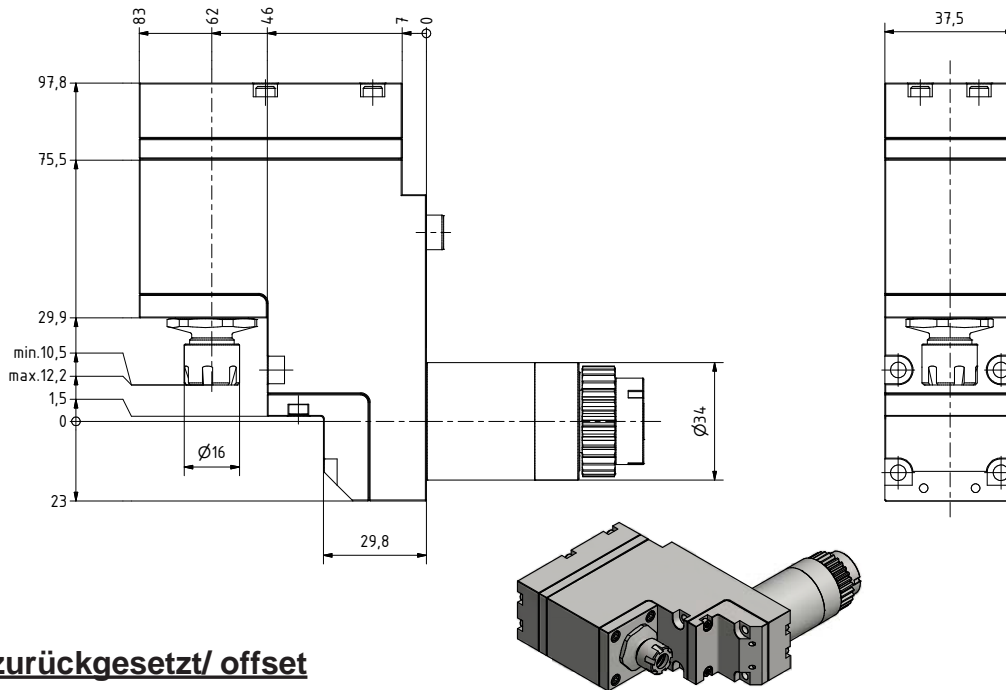
*Axial drilling and milling head*  
STAR



Nr. / No.	Spannzange/ Collet	i	n <sub>max</sub> 1/min	T <sub>max</sub> Nm
40.STAR16-57161	ER16 (1-10)	1:1	9000	25

*Radial Bohr und Fräskopf*  
STAR

*Radial drilling and milling head*  
STAR

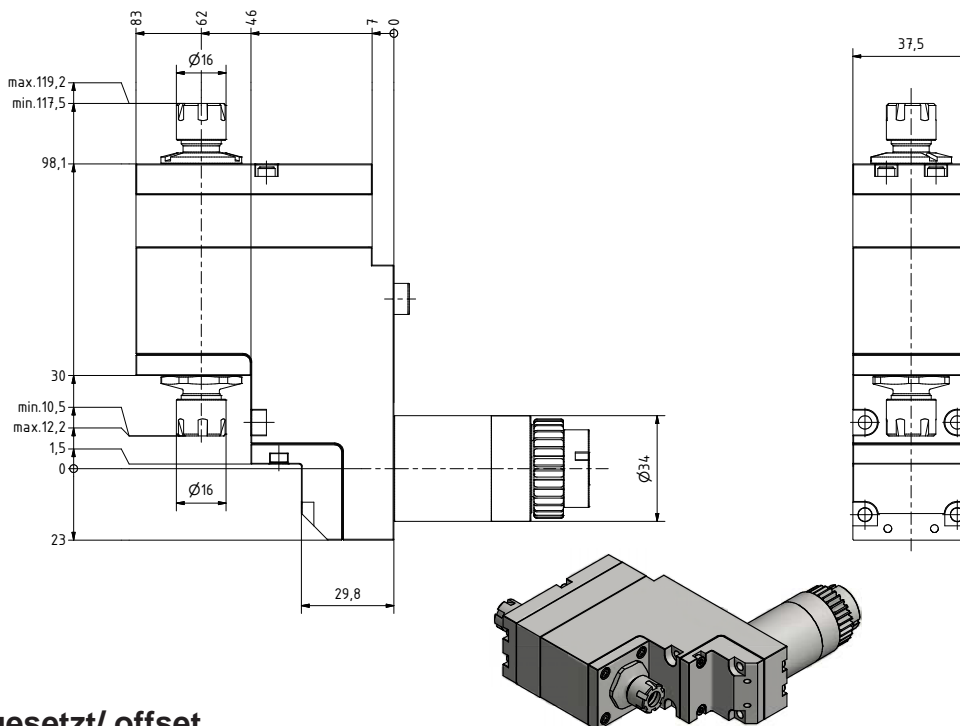


**zurückgesetzt/ offset**

Nr. / No.	Spannzange/ Collet	i	n <sub>max</sub> 1/min	T <sub>max</sub> Nm
80.STAR12-57157	ER11 (1-10)	1:1	9000	25

*Radial Bohr und Fräskopf*  
STAR

*Radial drilling and milling head*  
STAR

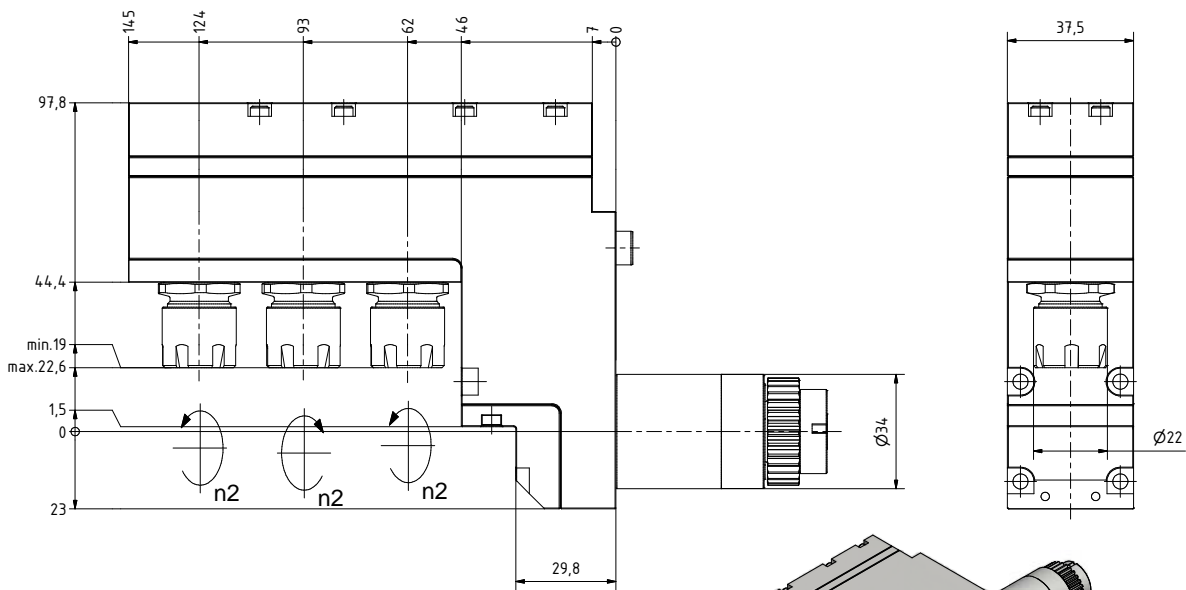


**zurückgesetzt/ offset**

Nr. / No.	Spannzange/ Collet	i	n <sub>max</sub> 1/min	T <sub>max</sub> Nm
80.STAR12D-57156	ER11 (1-10)	1:1	9000	25

*Radial Bohr und Fräskopf*  
**STAR**

*Radial drilling and milling head*  
**STAR**

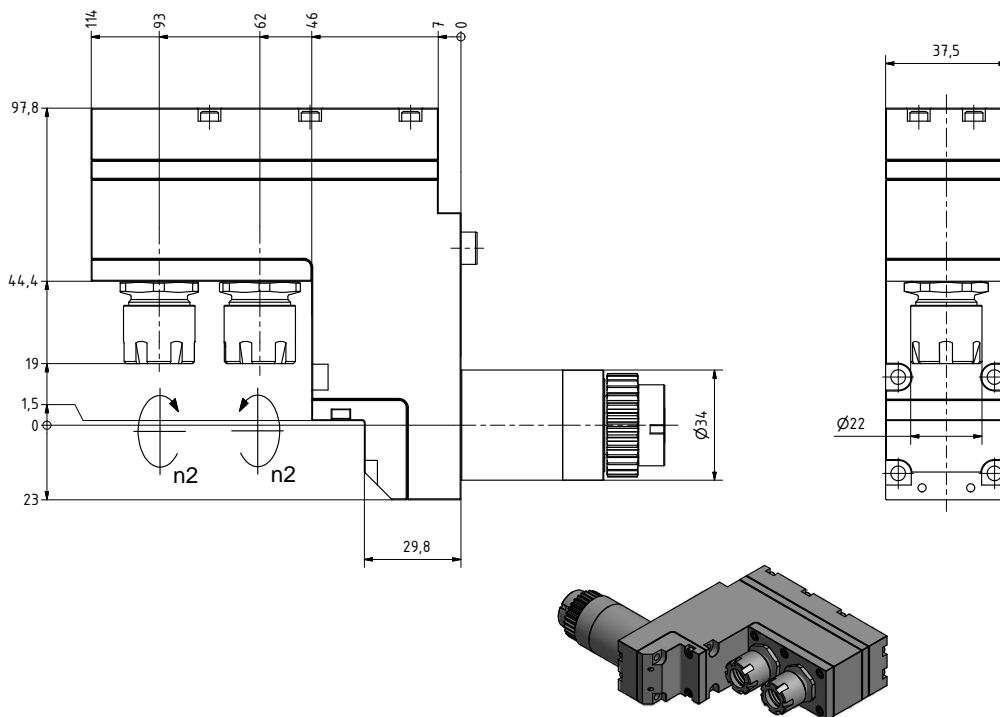


**zurückgesetzt/ offset**

Nr. / No.	Spannzange/ Collet	i	n <sub>max</sub> 1/min	T <sub>max</sub> Nm
80.STAR16TX-66151	ER16 (1-10)	1:1	9000	25

*Radial Bohr und Fräskopf*  
**STAR**

*Radial drilling and milling head*  
**STAR**

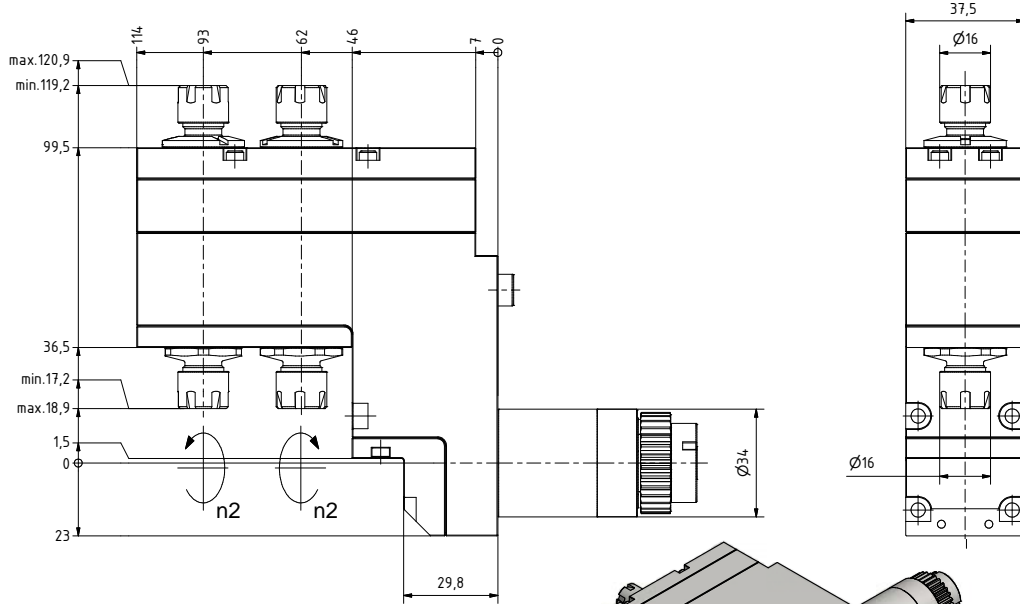


**zurückgesetzt/ offset**

Nr. / No.	Spannzange/ Collet	i	n <sub>max</sub> 1/min	T <sub>max</sub> Nm
80.STAR16DX-54151	ER16 (1-10)	1:1	9000	25

*Radial Bohr und Fräskopf*  
**STAR**

*Radial drilling and milling head*  
**STAR**

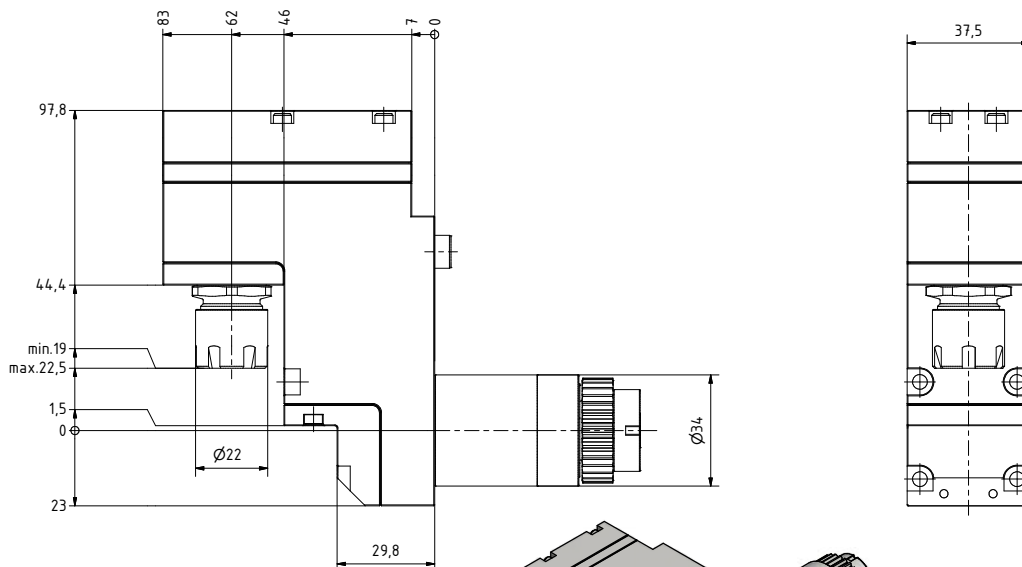


**zurückgesetzt/ offset**

Nr. / No.	Spannzange/ Collet	i	n <sub>max</sub> 1/min	T <sub>max</sub> Nm
80.STAR12QX-66159	ER11 (1-7)	1:1	9000	25

*Radial Bohr und Fräskopf*  
**STAR**

*Radial drilling and milling head*  
**STAR**



**zurückgesetzt/ offset**

Nr. / No.	Spannzange/ Collet	i	n <sub>max</sub> 1/min	T <sub>max</sub> Nm
80.STAR16-57151	ER16 (1-10)	1:1	9000	25



### **EWS Weigele GmbH & Co. KG**

Maybachstraße 1 · D-73066 Uhingen  
Telefon +49(0)7161-93040-100  
Telefax +49(0)7161-93040-30  
E-Mail: [info@ews-tools.de](mailto:info@ews-tools.de)  
[www.ews-tools.de](http://www.ews-tools.de)

### **WSW Spannwerkzeuge-Vertriebs GmbH**

Maybachstr. 1 · D-73066 Uhingen  
Telefon +49(0)7161-93040-100  
Telefax +49(0)7161-93040-30  
E-Mail: [info@wsw-collets.de](mailto:info@wsw-collets.de)  
[www.wsw-collets.de](http://www.wsw-collets.de)

### **Command Tooling Systems**

13931 Sunfish Lake Blvd NW  
Ramsey · MN 55303 USA  
Telefon +1-763-576-6910  
Telefax +1-763-576-6911  
[support@commandtool.com](mailto:support@commandtool.com)  
[www.commandtool.com](http://www.commandtool.com)

### **EWS Korea Co. Ltd.**

60-11 · Woongnam-Dong  
Changwon  
Kyoung-Nam Korea  
Telefon +82 55-267-8085  
Telefax +82 55-262-3118  
E-Mail: [info@ewskorea.co.kr](mailto:info@ewskorea.co.kr)  
[www.ewskorea.co.kr](http://www.ewskorea.co.kr)

### **EWS Ltd.**

Krassnaja str., 38  
600015 Vladimir  
Russland  
Telefon +7-4922-541160  
Telefax +7-4922-541160  
E-Mail: [info@ews-russland.ru](mailto:info@ews-russland.ru)  
[www.ews-russland.ru](http://www.ews-russland.ru)

